

SPECIFICATIONS – LEVANT Bosgraaf Svalbard 41



GENERAL	
Boat name	Levant
Model/Type	Svalbard 41
Lying at	Medemblik, The Netherlands
Afloat or Ashore	Afloat
Builder	Peter Bosgraaf / Niels Feis
Designer	Peter Bosgraaf
Year Launched	2016
Length Overall	12.43m
Length Waterline	12m
Beam	3.92m
Draught min/max	0.95m - 2.50m
Air Draught	19.00m
Displacement	8000kg
Empty weight	8000kg
Average – topspeed	7.5 kn
Keel/Board type	Hydraulic lifting keel
Keel shoes	bulb
Steering	tiller steered, twin rudders
Hull No / Series No	1
CE No + HIN Number	none
Flag	Dutch
BUILD MATERIAL	
Hulls	composite sandwich / 8 mm glass-polyester, then 14mm foam & 6mm glass-polyester
Decks/Cabins	composite sandwich / 6mm outside, 15mm foam & 4mm inside glass-polyester
Bulkheads	15 mm plywood glassed in
Cross-beams	none

ANASAZI

James M. Burwick
 jamesburwick@anasazi-ltda.com
 (+55) 12 9 9676 6323 WhatsApp
 www.anasazi-ltda.com

Anti-osmosis system	outside skin has one layer of vinylester / epoxy barrier coat
Last date antifouled	2018
RIGGING + SAILS	
Type of rig	3-spreader rig, Nitronic 50 Rod rigging
Mainsail	50 m2, slab reefing, material cruising laminate
Sail Battens	4
Sail Cover	for Main and Jib
Furling Jib	100% genoa on a furler, 42m2, material: cruising laminate
Gennaker/Screecher	Code 0 on a furler
Storm Jib	15 m2 orange, material Dacron
Other foresails	none
Spinnaker	Gennaker with a sock
Spi-launcher	
Reefing system main	slab reefing, 2 reefs
Reefing system jib	Roller furling
Main sheet system	1:6 and 1:5
Head-sail furler	Harken
Sheet winches	2x 40ST Andersen winches
Halyard winches	2 46ST Andersen winches on top of roof
Rope Stoppers	
Mast	2 stoppers on mast, mast - John Mast (Denmark)
Boom	John Mast (Denmark)
Spinnaker Pole	none
Whiskerpole	none
Bowsprit	Aluminium
Standing Rigging	Nitronic 50 rod rigging, backstay spectra
Running Rigging	Spectra
Mast lowering system	none
Mast climbing system	None
ACCOMMODATION	
Cabins	2 doubles aft, 1 double fwd
Bunks	1 single pilot berth / settee on SB, 1 L shaped settee on P side
Sheets	none
Headroom bridged	1.85
Headroom hull	1.85
Galley Location	on SB side aft, and water at CL
Cooker	3-burner
Oven/Grill	Yes
Gas bottle(s)	Aft in locker
Cutlery	none
Worktop	none
Sink	yes
Fridge/box	top filler
Freezer	none
Shower	yes
WC type(s)	manual

ANASAZI

James M. Burwick
 jamesburwick@anasazi-ltda.com
 (+55) 12 9 9676 6323 WhatsApp
 www.anasazi-ltda.com

Washbasin(s)	yes
Lighting	All LED
Lockers	all cabins have a locker
Hanging lockers	1 heated hanging locker
Ceiling lining	wood liner
Hullside lining	none fitted
Chart table	yes
Navigation tools	AIS, Wifi computers, Raymarine speed, depth & wind
Clock	yes
Barometer	none fitted
Other	Temp
ENGINE – INSTALLATION	
Engine(s)	28HP, 3000rpm Mitsubishi S3L2, 1:3 gear box
Build-year/1st fitted	1990 - gear box 2005
Date last serviced	2020
Engine hours	
Power-HP / LKW	28Hp
Cylinders	3-cylinder
Drive System	fixed shaft
Propeller	folding 2-blade
Fuel	diesel
Fuel tank	90L
Consumption / hour	2.5L/hr
Average – topspeed	7.5 knots
Bowthruster	Vetus bow thruster 75 kgf 4.4kw 6hp /12V
MECHANICAL	
Water – supply	12V
Water tank(s)	250L
Seawater – pumps	none
Water maker	
Water heater	yes / Engine driven & 220V
Holding Tank	yes / 45L
Heating	12V Planar 40 4kw
Cockpit shower	
Stereo System	
S.S.B. Radio	
Other	
ELECTRONICS	
Battery(ies)	2x 150AM AGM house bank, 1x 80Amp AGM start battery
110/220V Charger	none
Solar Panel(s)	2x 90W on top of pilot house
Generator	none
Alternator	on main engine
Wind/Water Generator	none
Shore power	fitted with breakers

ANASAZI

James M. Burwick
 jamesburwick@anasazi-ltda.com
 (+55) 12 9 9676 6323 WhatsApp
 www.anasazi-ltda.com

Nav. Lights	3-color, white on top of mast, white on front of mast, white on transom, red and green on pilot house
Other	750L water ballast tanks / 12V 135L/min fill
ELECTRONICS	
Battery(ies)	2x 150AM AGM house bank, 1x 80Amp AGM start battery
110/220V Charger	none
Solar Panel(s)	2x 90W on top of pilot house
Generator	none
Alternator	on main engine
Wind/Water Generator	none
Shore power	fitted with breakers
Nav. Lights	3-color, white on top of mast, white on front of mast, white on transom, red and green on pilot house
Other	750L water ballast tanks / 12V 135L/min fill
INSTRUMENTS	
Compass	yes / against aft bulkhead, Plastimo with light
Hand bearing compass	yes
Autopilot	Raymarine
Echosounder	Raymarine
Log/speed	Raymarine
Windset	Raymarine
Navtex	none
VHF	none
Satellite phone	none
GPS	yes
Chartplotter	none
Radar	none
Binoculars	none
Charts	Dutch
Laptops	None
SAFETY	
Pulpit	316 SS
Pushpit	Yes, with seat
Lifelines	none
Boarding ladder	1 fitted
Safety harness	
Life jacket(s)	
Danbuoy	
Life raft	1 life raft fitted needs inspection
EPIRB	none
Distress Signals	none
Harnesses	
Escape hatch(es)	several
First-aid kit	1 fitted
Fire Extinguishers	1 fitted
Fire Blanket	1 fitted

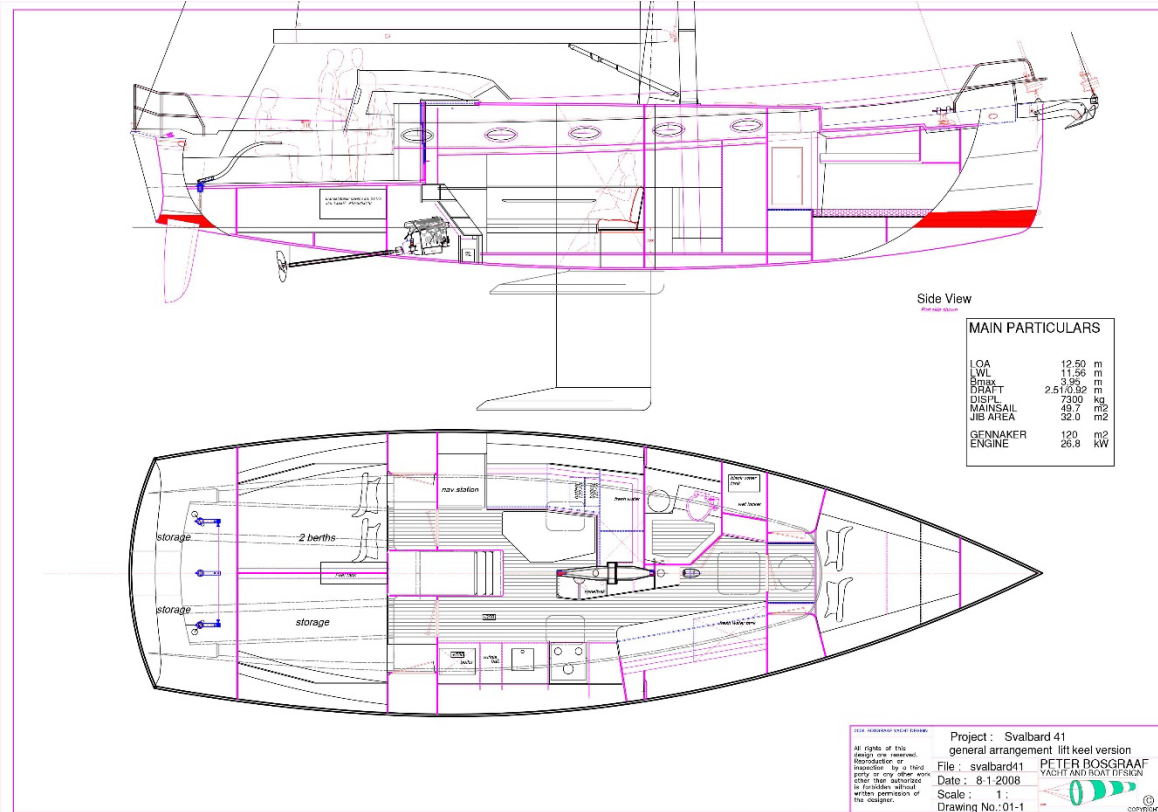
ANASAZI

James M. Burwick
 jamesburwick@anasazi-ltda.com
 (+55) 12 9 9676 6323 WhatsApp
 www.anasazi-ltda.com

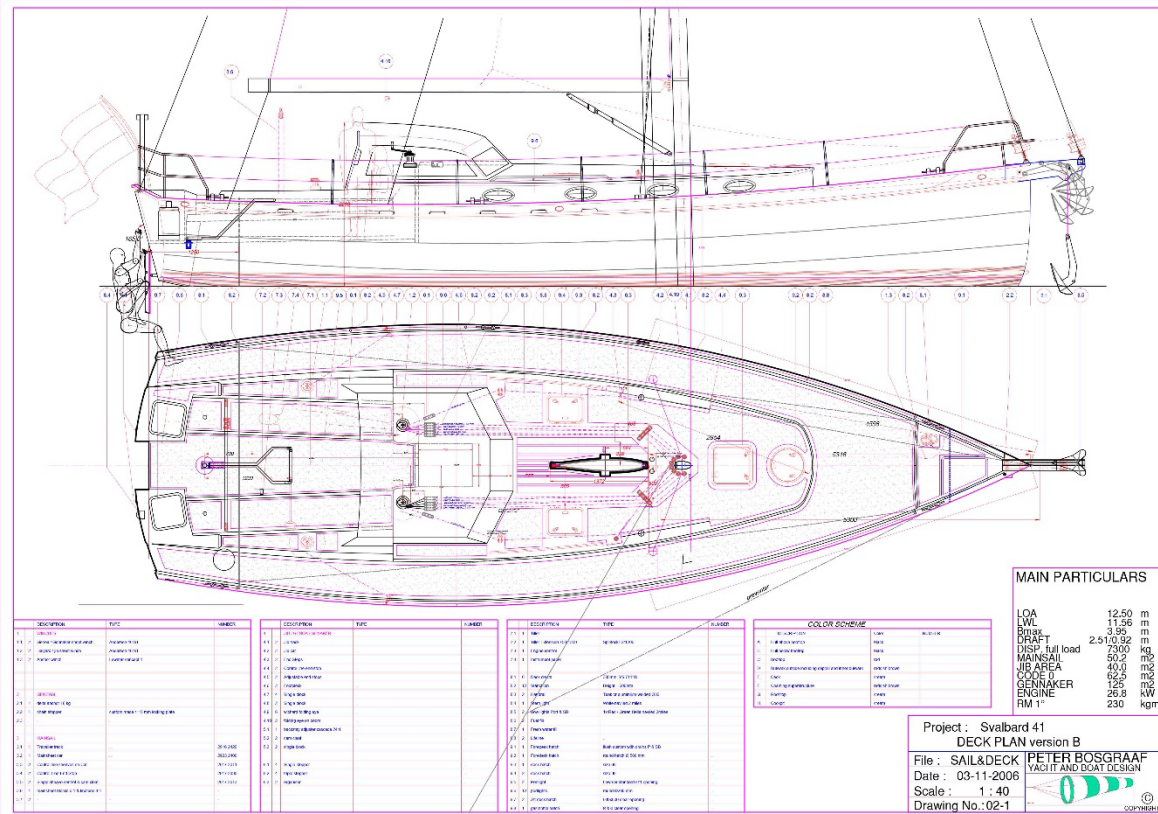
Gas detector	1 fitted
Radar reflector	none
Bilge pump(s)	pump for water
Emergency steering	none fitted (double rudder)
Fog horn	None
DECK EQUIPMENT	
Deck hatches	1x round one in fwd cabin, 1x sz60 in main cabin, 2x sz30 in main cabin
Opening portholes	2x in aft cabin, 4 in cabin, 4 closed ones in main cabin
Sprayhood	pilot house
Cockpit tent	none
Sun awning	none
Cockpit table	none
Cockpit cushions	none
Fenders	2 round, 4 cylinders
Mooring lines	a lot
Gangway	none
Boat Hook	1x
Bucket	2x
Sea Anchor	FX37 aluminium 9.5 kg for yachts 46'-51' with 30m lead line anchors
Anchor(s)	12 kgss Plastimo Kobra
Anchor Rode	none
Anchor Chain	35 meter, 8mm grade A1
Anchor winch	Manual
DINGHY	
Build Material	none
Length x beam	
Outboard + build year	
Sailrig	
Oars	
Davits	
VARIOUS	
Tools	2 boxes of tools
Spare Parts	none
Road trailer	none
VAT + registration	21% VAT paid
Any known defects and/or faults	
OTHER	
Other Details	<p>The boat looks classic, but she is shaped from a modern hull. Twin rudder helm steering and a lift keel from 0.95 - 2.5m gives her the possibilities to go almost everywhere.</p> <p>The boat was intended for solo sailing, so all lines are led aft to the cockpit. The steel keel has a bulb which brings the ballast down. Another feature is the 750L water-ballast tank, this brings down the heeling with 5 degrees, for comfortable sailing.</p>

ANASAZI

James M. Burwick
 jamesburwick@anasazi-ltda.com
 (+55) 12 9 9676 6323 WhatsApp
 www.anasazi-ltda.com



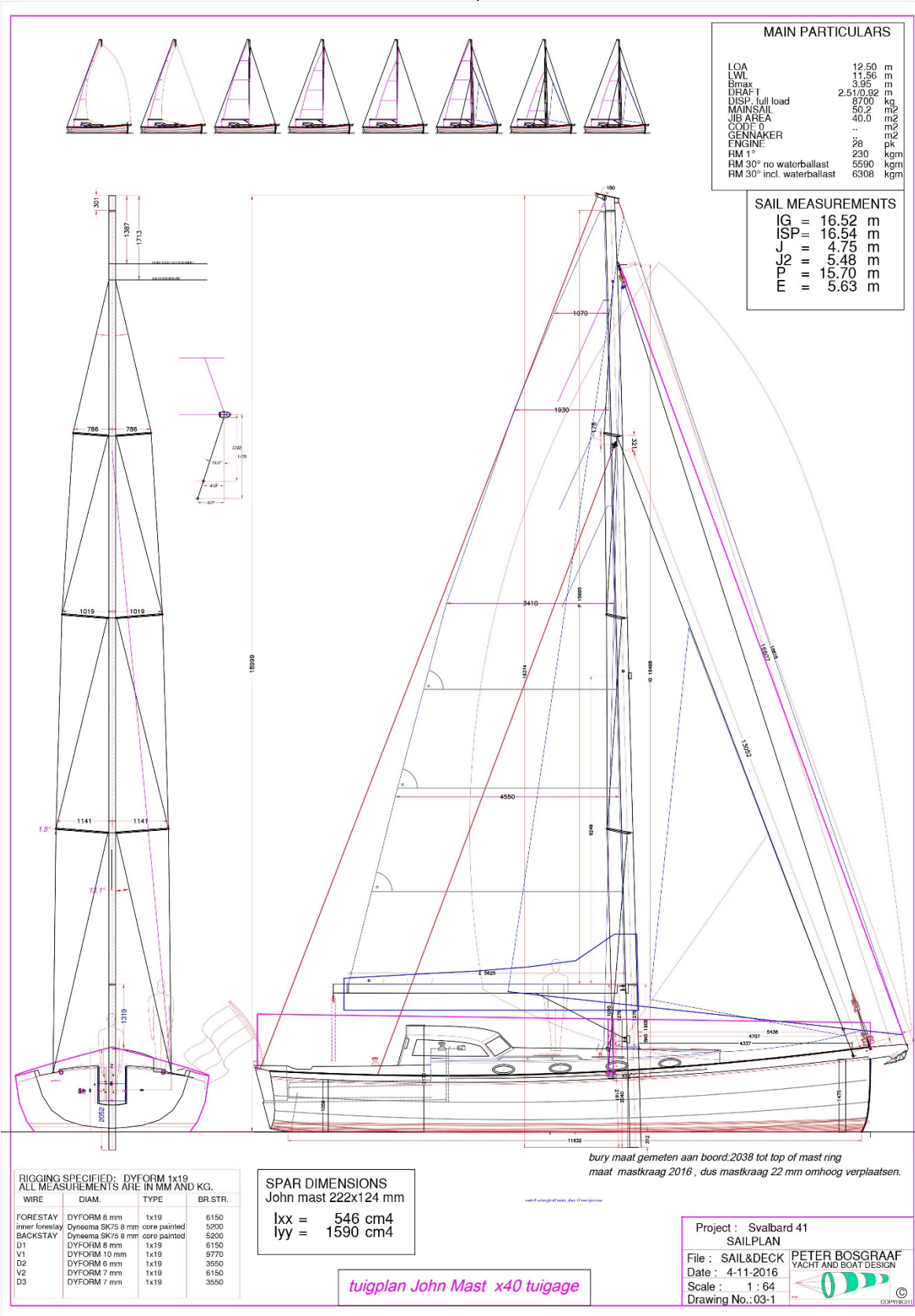
Project : Svalbard 41
 general arrangement till keel version
 File : svalbard11 PETER BOSGRAAF
 Date : 8-1-2008 YACHT AND BOAT DESIGN
 Scale : 1 : 1
 Drawing No.:01-1



Project : Svalbard 41
 DECK PLAN version B
 File : SAIL&DECK PETER BOSGRAAF
 Date : 03-11-2008 YACHT AND BOAT DESIGN
 Scale : 1 : 40
 Drawing No.:02-1

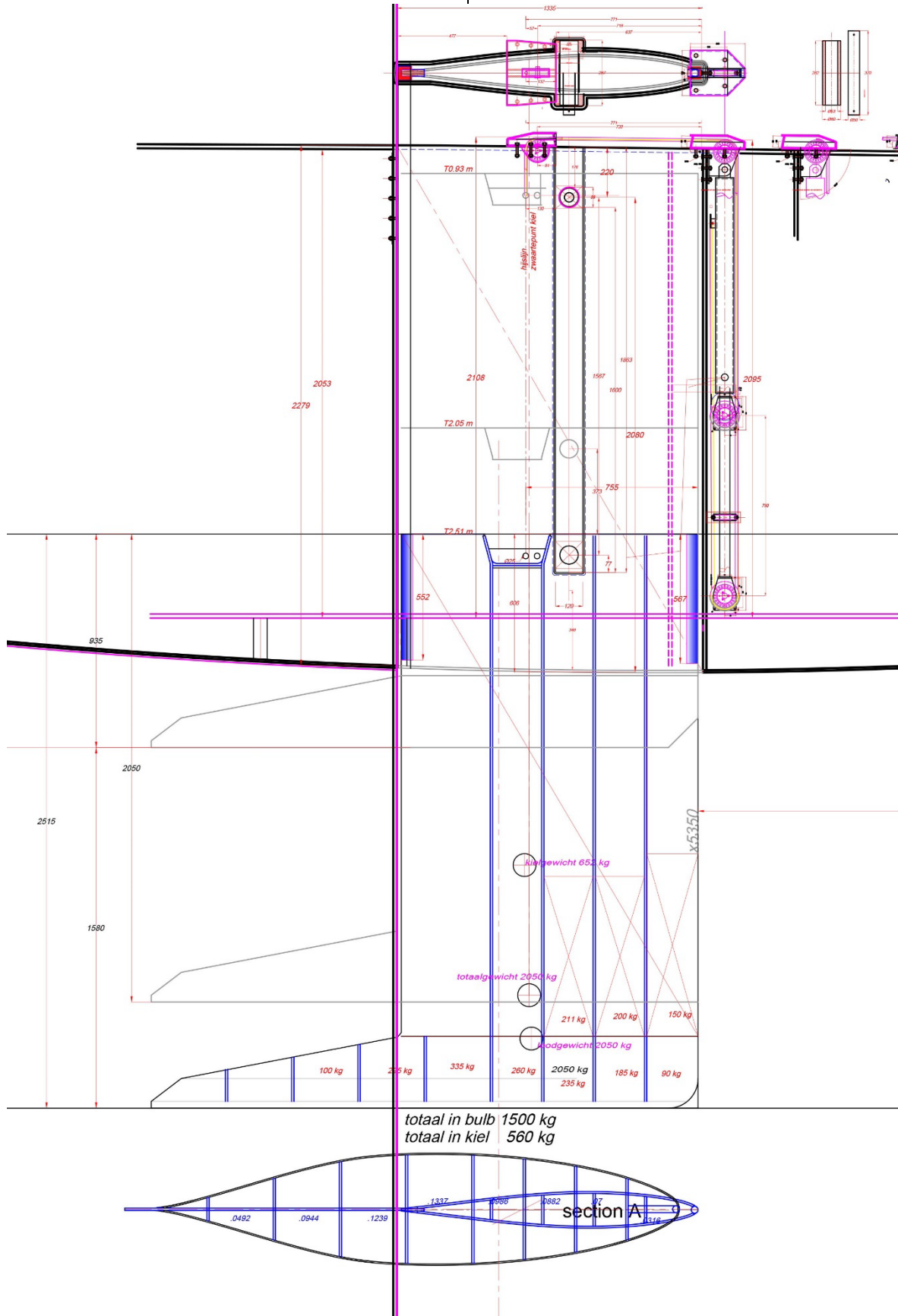
ANASAZI

James M. Burwick
 jamesburwick@anasazi-ltda.com
 (+55) 12 9 9676 6323 WhatsApp
 www.anasazi-ltda.com



ANASAZI

James M. Burwick
 jamesburwick@anasazi-ltda.com
 (+55) 12 9 9676 6323 WhatsApp
 www.anasazi-ltda.com



ANASAZI

James M. Burwick
jamesburwick@anasazi-ltda.com
(+55) 12 9 9676 6323 WhatsApp
www.anasazi-ltda.com



ANASAZI

James M. Burwick
jamesburwick@anasazi-ltda.com
(+55) 12 9 9676 6323 WhatsApp
www.anasazi-ltda.com



ANASAZI

James M. Burwick
jamesburwick@anasazi-ltda.com
(+55) 12 9 9676 6323 WhatsApp
www.anasazi-ltda.com



ANASAZI

James M. Burwick
jamesburwick@anasazi-ltda.com
(+55) 12 9 9676 6323 WhatsApp
www.anasazi-ltda.com



ANASAZI

James M. Burwick
jamesburwick@anasazi-ltda.com
(+55) 12 9 9676 6323 WhatsApp
www.anasazi-ltda.com



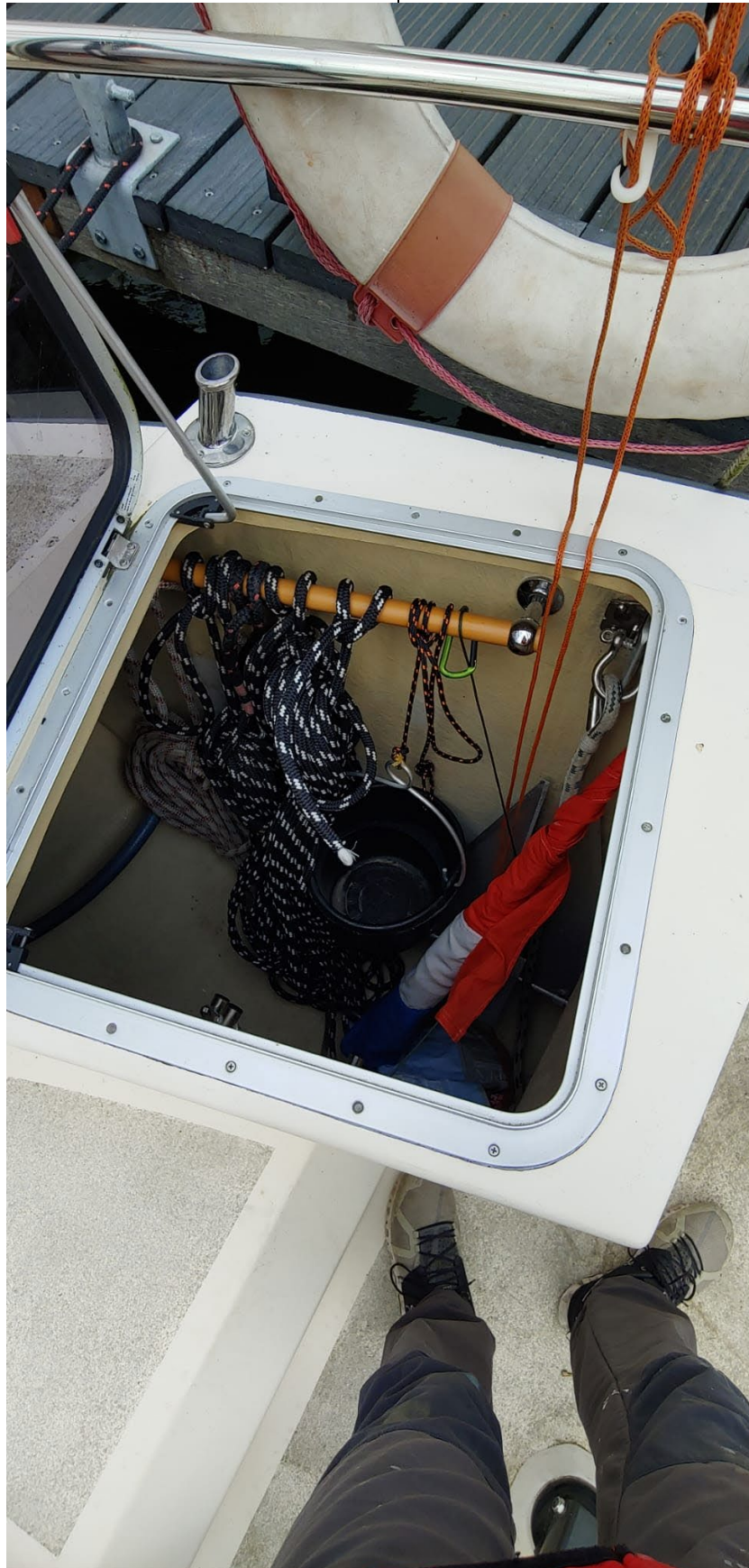
ANASAZI

James M. Burwick
jamesburwick@anasazi-ltda.com
(+55) 12 9 9676 6323 WhatsApp
www.anasazi-ltda.com



ANASAZI

James M. Burwick
jamesburwick@anasazi-ltda.com
(+55) 12 9 9676 6323 WhatsApp
www.anasazi-ltda.com



ANASAZI

James M. Burwick
jamesburwick@anasazi-ltda.com
(+55) 12 9 9676 6323 WhatsApp
www.anasazi-ltda.com



ANASAZI

James M. Burwick
jamesburwick@anasazi-ltda.com
(+55) 12 9 9676 6323 WhatsApp
www.anasazi-ltda.com



ANASAZI

James M. Burwick
jamesburwick@anasazi-ltda.com
(+55) 12 9 9676 6323 WhatsApp
www.anasazi-ltda.com



ANASAZI

James M. Burwick
jamesburwick@anasazi-ltda.com
(+55) 12 9 9676 6323 WhatsApp
www.anasazi-ltda.com



ANASAZI

James M. Burwick
jamesburwick@anasazi-ltda.com
(+55) 12 9 9676 6323 WhatsApp
www.anasazi-ltda.com



ANASAZI

James M. Burwick
jamesburwick@anasazi-ltda.com
(+55) 12 9 9676 6323 WhatsApp
www.anasazi-ltda.com



ANASAZI

James M. Burwick
jamesburwick@anasazi-ltda.com
(+55) 12 9 9676 6323 WhatsApp
www.anasazi-ltda.com



ANASAZI

James M. Burwick
jamesburwick@anasazi-ltda.com
(+55) 12 9 9676 6323 WhatsApp
www.anasazi-ltda.com



ANASAZI

James M. Burwick
jamesburwick@anasazi-ltda.com
(+55) 12 9 9676 6323 WhatsApp
www.anasazi-ltda.com



ANASAZI

James M. Burwick
jamesburwick@anasazi-ltda.com
(+55) 12 9 9676 6323 WhatsApp
www.anasazi-ltda.com



ANASAZI

James M. Burwick
jamesburwick@anasazi-ltda.com
(+55) 12 9 9676 6323 WhatsApp
www.anasazi-ltda.com



ANASAZI

James M. Burwick
jamesburwick@anasazi-ltda.com
(+55) 12 9 9676 6323 WhatsApp
www.anasazi-ltda.com



ANASAZI

James M. Burwick
jamesburwick@anasazi-ltda.com
(+55) 12 9 9676 6323 WhatsApp
www.anasazi-ltda.com



ANASAZI

James M. Burwick
jamesburwick@anasazi-ltda.com
(+55) 12 9 9676 6323 WhatsApp
www.anasazi-ltda.com



ANASAZI

James M. Burwick
jamesburwick@anasazi-ltda.com
(+55) 12 9 9676 6323 WhatsApp
www.anasazi-ltda.com

